

MAY 6 2010

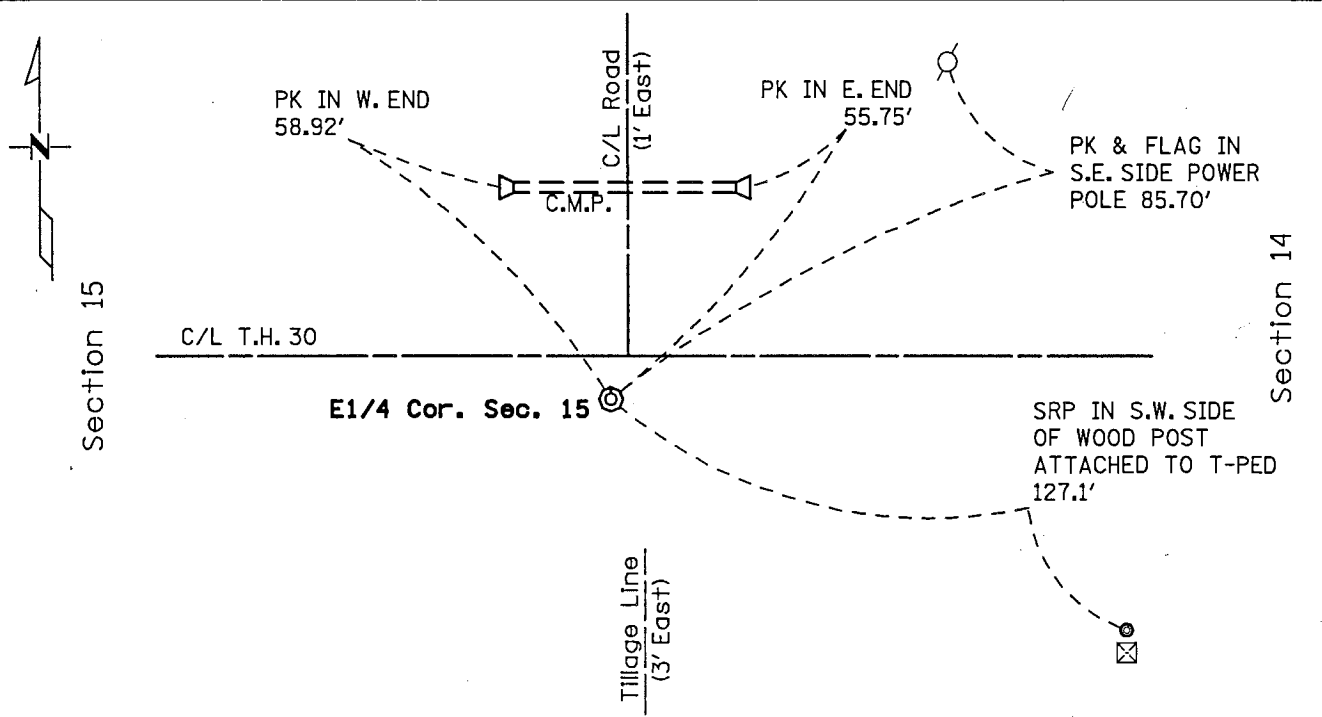
James V. Johnson

CERTIFICATE OF LOCATION OF GOVERNMENT CORNER

EAST QUARTER Corner of Section 15, Township 107, Range 41
5th Principal Meridian, State of Minnesota, County of MURRAY

At the corner location shown on the sketch:

- On JULY 27, 2009 found an Minnesota Dept. of Transportation Aluminum Capped
DATE
Iron Monument.
- left monument as found lowered monument removed monument (explain)
- On _____ placed a _____
DATE



Statement of evidence for this corner location is on back of this page.

I hereby certify that this document was researched and prepared by me or under my direct supervision.

Signature: *Matt J. Schlegel* Date: 4-21-2010 License No. 24640
 Title: Land Surveyor Professional Engineer County Surveyor County Engineer

Certificate of Location of Government Corner

East Quarter Corner, Section 15, Township 107 North, Range 41 West

July 2009

A Mn/DOT survey crew, (crew chief Jeff Balbach) found the Minnesota Department of Transportation Aluminum Capped Iron Monument placed by Duane Bonnema in 1989. The chain ties were updated.

For a more complete history of this corner, refer to the Certificate of Location of Government Corner Document filed with the Murray County Recorder on November 15, 1989.